

35 YEARS OF RESEARCH EXCELLENCE

We're proud to be one of the top providers
of research assays for the last 35 years



PRODUCT CATALOG

See our full line of high quality assays

SHAPING THE FUTURE



We appreciate the support of our customers throughout the years as we continue to grow

Thank you for taking the time to browse through our product catalog. We pride ourselves on providing high quality assays to the research community, as we have been doing for the last 35 years.

Crystal Chem started in the diabetes field as the first company to launch a mouse insulin assay using a 5 μ L sample volume. Since that time, we have grown to become one of the leading companies in diabetes research, with our kits being used by leading diabetes institutions and cited in thousands of publications around the world.

As the demand for our products increased, we have expanded into other research areas, including cardiovascular disease, oxidative stress, immunology, and toxicology. We look forward to continuing to expand our product portfolio over the next few years.

As you browse our catalog, please don't hesitate to contact us if you have any questions. We look forward to serving you!

A handwritten signature in blue ink that reads "Hema Shah".

Hema Shah
Vice President

TABLE OF CONTENTS

Cardiovascular Disease	4
Diabetes & Obesity	8
Endocrinology & Oxidative Stress . . .	14
Immunology	20
Toxicology	24
Food Allergen Kits	28



CARDIOVASCULAR DISEASE

Cardiovascular diseases are the #1 cause of deaths globally. In 2012, they represented 31% of all global deaths or 17.5 million people.

Although the main risk factors for cardiovascular diseases are related to unhealthy diets and lack of physical activity, indications of cardiovascular diseases can appear in the bloodstream. The intermediate risk factors found in blood are used to screen and monitor treatments as well as develop new therapeutic approaches.

Crystal Chem is a leading supplier to cardiovascular disease researchers who study these intermediate risk factors in humans, rats, and mice.

**17.5
MILLION**

Cardiovascular diseases result in 17.5 million global deaths each year

CARDIOVASCULAR DISEASE

Browse our wide selection of assays for cardiovascular research, including assays that measure c-reactive peptide, cholesterol, and more.

FEATURED PRODUCT: RAT AND MOUSE LDL / HDL CHOLESTEROL KITS

Crystal Chem's LDL and HDL assays offer researchers a quick and accurate method to measure lipid levels in human, mouse, and rat samples. The assays take less than 15 minutes and can be run either manually, in a 96-well microplate or on a clinical chemistry analyzer.

The kits use a proprietary PVS/PEGME technology that provides outstanding performance.

	HDL Kits	LDL Kits
Assay Time	10 min	10 min
Sample Vol	3 µL	3 µL
Sample Types	Serum, Plasma • EDTA • Citrate • Lithium Heparin	Serum, Plasma • EDTA • Citrate
Range	1.5 - 180.0 mg/dL	4.5 - 245.0 mg/dL
Accuracy	CVs ≤ 10%	CVs ≤ 10%

Cat #	Product Name	Assay Range	Sensitivity	Sample Size	Sample Type	Assay Time
80665	Antithrombin III Rat ELISA	12.5-400 ng/mL	1.4 ng/mL	5 µL	Serum, Plasma	1h 40m
80702	Apolipoprotein A-1 Human ELISA	15.6-500 ng/mL	4.1 ng/mL	2 µL	Serum, Plasma	1h 40m
80955	C-Reactive Protein High Sensitivity Human ELISA	100-10,000 ng/mL	10 ng/mL	5 µL	Serum	55m
80634	C-Reactive Protein Mouse ELISA	0.78-25 ng/mL	0.22 ng/mL	2 µL	Serum, Plasma	25m
80670	C-Reactive Protein Rat ELISA	6.25-200 ng/mL	1.3 ng/mL	5 µL	Serum, Plasma	25m
80279	D-Dimer Human Assay	0.23-8.0 µg/mL FEU	0.23 µg/mL FEU	3 µL	Plasma	10m
80713	Fibrinogen Human ELISA	12.5-400 ng/mL	2.1 ng/mL	2 µL	Serum, Plasma	1h 40m
80637	Fibrinogen Mouse ELISA	25-800 ng/mL	2.6 ng/mL	3 µL	Serum, Plasma	1h 40m
80714	Haptoglobin Human ELISA	3.13-200 ng/mL	0.82 ng/mL	5 µL	Serum, Plasma	35m
80639	Haptoglobin Mouse ELISA	1.95-125 ng/mL	0.59 ng/mL	5 µL	Serum, Plasma	40m
80677	Haptoglobin Rat ELISA	1.95-125 ng/mL	1.05 ng/mL	5 µL	Serum, Plasma	40m
80059	HDL Cholesterol Human Assay	1.1-184 mg/dL	1.1 mg/dL	3 µL	Serum, Plasma	10m

CARDIOVASCULAR DISEASE

MOUSE & RAT C-REACTIVE PROTEIN (CRP) ELISA KITS

C-reactive protein (CRP) is a pentameric protein synthesized in the liver. Levels of CRP rise as a response to inflammation and increasing IL-6 concentrations, and it can be used as a marker for inflammation resulting from surgery, infection, auto-immune diseases, and cardiovascular disease.

Both kits use small sample volumes and short assay times to produce accurate and consistent results.

	Mouse Kit	Rat Kit
Assay Time	25 min	25 min
Sample Vol	3 μ L	5 μ L
Sample Types	<ul style="list-style-type: none"> • Serum • Plasma 	<ul style="list-style-type: none"> • Serum • Plasma
Range	0.78 - 25 ng/mL	6.25 - 200 ng/mL
Accuracy	CVs \leq 10%	CVs \leq 10%


Cat #	Product Name	Assay Range	Sensitivity	Sample Size	Sample Type	Assay Time
79990	HDL Cholesterol Mouse Assay	1.5-180 mg/dL	1.1 mg/dL	3 μ L	Serum, Plasma	10m
79970	HDL Cholesterol Rat Assay	1.5-180 mg/dL	1.1 mg/dL	3 μ L	Serum, Plasma	10m
80069	LDL Cholesterol Human Assay	1.7-250 mg/dL	1.7 mg/dL	3 μ L	Serum, Plasma	10m
79980	LDL Cholesterol Mouse Assay	4.5-245 mg/dL	4.5 mg/dL	3 μ L	Serum, Plasma	10m
79960	LDL Cholesterol Rat Assay	4.5-245 mg/dL	4.5 mg/dL	3 μ L	Serum, Plasma	10m
80727	Myeloperoxidase Human ELISA	1.88-120 ng/mL	0.99 ng/mL	30 μ L	Serum, Plasma	1h 30m
80970	Plasma Renin Activity Human ELISA	0.2-60 ng/mL Ang-I	0.15 ng/mL Ang-1	50 μ L	Plasma	3h 30m
80731	Plasminogen Human ELISA	6.25-200 ng/mL	2.12 ng/mL	5 μ L	Serum, Plasma	2h 10m
80656	Plasminogen Mouse ELISA	6.25-200 ng/mL	0.86 ng/mL	5 μ L	Serum, Plasma	1h 30m
80688	Plasminogen Rat ELISA	3.13-200 ng/mL	1.38 ng/mL	5 μ L	Serum, Plasma	1h 30m
80656	Plasminogen Mouse ELISA	6.25-200 ng/mL	0.86 ng/mL	5 μ L	Plasma, Serum	1h 30m
80688	Plasminogen Rat ELISA	3.13-200 ng/mL	1.38 ng/mL	5 μ L	Plasma, Serum	1h 30m
80734	Serum Amyloid A Human ELISA	1.56-100 ng/mL	0.5 ng/mL	6 μ L	Plasma, Serum	1h 30m
80659	Serum Amyloid A Mouse ELISA	31.3-2,000 ng/mL	11.0 ng/mL	5 μ L	Plasma, Serum	1h 40m

A STANDARD OF EXCELLENCE



**HIGH
QUALITY**

WE'RE COMMITTED TO PROVIDING ASSAYS OF THE HIGHEST QUALITY, SO YOU GET RESULTS YOU CAN TRUST



DIABETES & OBESITY

Diabetes, a disease affecting the body's ability to produce or control insulin, affects 9% of the world's adult population, and is projected to affect over 350 million people by 2030. Medical costs directly related to the disease totaled over \$306B in 2022 in the United States alone. Additionally, 80-90% of those affected with the most common type of diabetes, Type II, are obese.

Crystal Chem is the leading provider of high quality assays for diabetes and obesity research. We gained recognition through our core line of insulin ELISA kits and leptin ELISA kits. We now offer a comprehensive product line of important markers in diabetes and obesity research.



We're proud to be the leading worldwide provider of diabetes and obesity research assays.

DIABETES & OBESITY

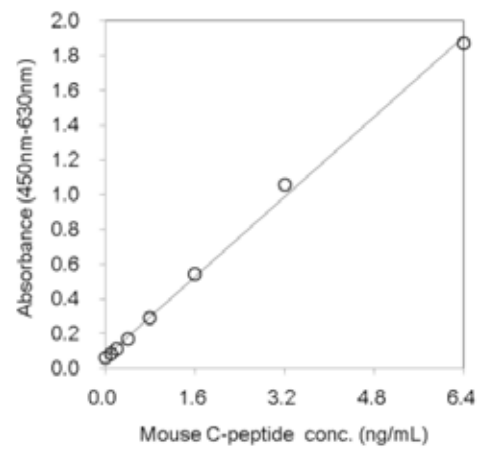
Browse our wide selection of assays for diabetes and obesity research, including assays that measure insulin, leptin, adiponectin, c-peptide, GIP, GLP, and more.

FEATURED PRODUCT: C-PEPTIDE ELISA KITS

Crystal Chem's mouse and rat c-peptide kits are the only c-peptide kits on the market to use a 5 µL sample volume.

In addition to their small sample volume, the kits have excellent cross-reactivity with both c-peptide I (80-120%) and c-peptide II (100%), and are validated for all three major sample types - serum, plasma, and cell culture.

Mouse C-Peptide Standard Curve



Cat #	Product Name	Assay Range	Sensitivity	Sample Size	Sample Type	Assay Time
80571	Adiponectin Human ELISA	2-100 ng/mL	0.3 ng/mL	10 µL	Serum, Plasma	1h 45m
80569	Adiponectin Mouse ELISA	0.025-1 ng/mL	0.008 ng/mL	5 µL	Serum, Plasma, Cell Culture	2h 30m
80570	Adiponectin Rat ELISA	0.25-10 ng/mL	0.08 ng/mL	5 µL	Serum, Plasma	2h 30m
80695	Albumin Human ELISA	6.25-200 µg/mL	1.90 ng/mL	2 µL	Urine, Serum, Plasma	1h 40m
80630	Albumin Mouse ELISA	7.8-500 ng/mL	1.70 ng/mL	2 µL	Urine, Serum, Plasma	1h 10m
80662	Albumin Rat ELISA	6.25-400 ng/mL	1.62 ng/mL	2 µL	Urine, Serum, Plasma	1h 10m
80268	Bile Acids Total Human Assay	0-200 µmol/L	N/A	15 µL	Serum, Plasma	10m
80471	Bile Acids Total Mouse Assay	0-200 µmol/L	N/A	15 µL	Serum, Plasma	< 15m
80461	Bile Acids Total Rat Assay	0-200 µmol/L	N/A	15 µL	Serum, Plasma	< 15m
80954	C-Peptide Human ELISA	0.37-15 ng/mL	0.1 ng/mL	25 µL	Serum, Plasma	2h 15m
90050	C-Peptide Mouse ELISA	0.1-6.4 ng/mL	100 pg/mL	5 µL	Serum, Plasma, Cell Culture	2h 30m
90055	C-Peptide Rat ELISA	0.1-6.4 ng/mL	100 pg/mL	5 µL	Serum, Plasma, Cell Culture	2h 30m

DIABETES & OBESITY

Cat #	Product Name	Assay Range	Sensitivity	Sample Size	Sample Type	Assay Time
80189	Creatinine Human Assay (Enzymatic)	0.15-141 mg/dL	0.15 mg/dL	8 µL	Serum, Urine	10m
80350	Creatinine Mouse Assay (Enzymatic)	0.15-141 mg/dL	0.15 mg/dL	< 10 µL	Serum, Urine	< 30m
80340	Creatinine Rat Assay (Enzymatic)	0.15-141 mg/dL	0.15 mg/dL	< 10 µL	Serum, Urine	< 30m
81509	GIP Active Human ELISA	0.78-50 pM	0.78 pM	50 µL	Plasma, Cell Culture	3h 30m
81511	GIP Active Mouse ELISA	1.56-100 pM	1.56 pM	15 µL	Plasma, Cell Culture	3h 30m
81510	GIP Active Rat ELISA	0.78-50 pM	0.78 pM	50 µL	Plasma, Cell Culture	3h 30m
81515	GIP Human ELISA	3.1-200 pM	3.1 pM	50 µL	Plasma, Cell Culture	3h 30m
81527	GIP Mouse 10 µL ELISA Kit	2.5-600 pM	2.5 pM	10 µL	Plasma, Cell Culture	Overnight
81516	GIP Rat ELISA	3.1-200 pM	3.1 pM	50 µL	Plasma, Cell Culture	3h 30m
90125	Glargine Human ELISA	10-250 mU/L	0.8 mU/L	25 µL	Plasma	6 h 15m
81506	GLP-1 Human ELISA	1.24-300 pM	1.24 pM	25 µL	Plasma, Cell Culture	Overnight
81508	GLP-1 Mouse ELISA	1.24-300 pM	1.24 pM	10 µL	Plasma, Cell Culture	Overnight
81507	GLP-1 Rat ELISA	1.24-300 pM	1.24 pM	25 µL	Plasma, Cell Culture	Overnight
81512	GLP-2 Human ELISA	0.41-100 ng/mL	0.41 ng/mL	25 µL	Serum, Plasma	Overnight
81514	GLP-2 Mouse ELISA	0.41-100 ng/mL	0.41 ng/mL	25 µL	Serum, Plasma	Overnight
81513	GLP-2 Rat ELISA	0.14-100 ng/mL	0.14 ng/mL	25 µL	Serum, Plasma	Overnight
81520	Glucagon Human ELISA	7.8-500 pg/mL	1.1 pg/mL	10 µL	Serum, Plasma, Cell Culture	Overnight
81518	Glucagon Mouse ELISA	7.8-500 pg/mL	1.1 pg/mL	10 µL	Serum, Plasma, Cell Culture	Overnight
81519	Glucagon Rat ELISA	7.8-500 pg/mL	1.1 pg/mL	10 µL	Serum, Plasma, Cell Culture	Overnight
81696	Glucose Human Assay	0-675 mg/dL	N/A	2 µL	Urine, Serum, Plasma	5m
81692	Glucose Mouse Assay	0-675 mg/dL	N/A	2 µL	Urine, Serum, Plasma	5m
81694	Glucose Mouse Assay (10 Pack)	0-675 mg/dL	N/A	2 µL	Urine, Serum, Plasma	5m
81693	Glucose Rat Assay	0-675 mg/dL	N/A	2 µL	Urine, Serum, Plasma	5m
81695	Glucose Rat Assay (10 Pack)	0-675 mg/dL	N/A	2 µL	Urine, Serum, Plasma	5m

DID YOU KNOW?

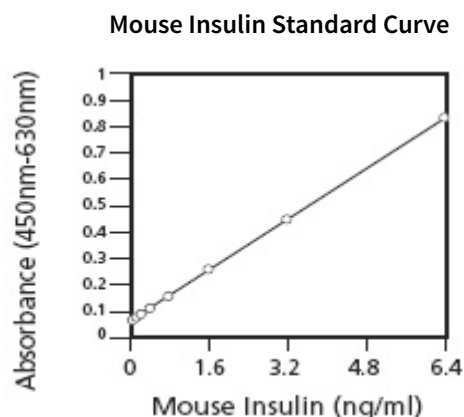
In 1998, Crystal Chem became the first company to develop a mouse insulin ELISA kit that used a 5 µL sample

MOUSE AND RAT INSULIN ELISA KITS

Crystal Chem's mouse and rat insulin ELISA kits have been used by leading diabetes research companies for the past 20 years. Our mouse insulin kit is the most sensitive on the market and has been cited in thousands of publications around the world.

Mouse insulin kit sensitivity and ranges (using 5µL)

- Sensitivity.....0.05 ng/mL
- Wide Range Assay.....0.1-12.8 ng/mL
- High Range Assay.....1-64 ng/mL



HUMAN INSULIN ELISA KIT

Crystal Chem's new human insulin ELISA kit features ~100% cross-reactivity with most therapeutic insulin analogues such as Lispro, Aspart, and Glargine. It also has virtually no cross-reactivity with other markers such as c-peptide, proinsulin, and mouse / rat insulin.

Cat #	Product Name	Assay Range	Sensitivity	Sample Size	Sample Type	Assay Time
80109	Glycated Serum Protein Human Assay	20.0-1,300 µmol/L	20 µmol/L	20 µL	Serum	10m
80420	Glycated Serum Protein Mouse Assay	20.0-1,300 µmol/L	20 µmol/L	20 µL	Serum	10m
80430	Glycated Serum Protein Rat Assay	20.0-1,300 µmol/L	20 µmol/L	20 µL	Serum	10m
80099	Hemoglobin A1c Human Assay	4.0-12.0%	4.0%	10 µL	Whole blood	8m
80310	Hemoglobin A1c Mouse Assay	3.5-13%	3.5%	5 µL	Whole blood	8m
80300	Hemoglobin A1c Rat Assay	3.5-13%	3.5%	5 µL	Whole blood	8m
90156	Insulin Dog ELISA	0.1-12.8 ng/mL or 1-64 ng/mL	0.05 ng/mL	5 µL	Serum, Plasma, Cell Culture	3h 10m
90336	Insulin Hamster ELISA	0.1-12.8 ng/mL or 1-64 ng/mL	0.05 ng/mL	5 µL	Serum, Plasma, Cell Culture	3h 10m
90095	Insulin Human ELISA	0.9-220 mU/L	0.25 mU/L	25 µL	Serum, Plasma	2h 30m
90096	Insulin Human ELISA (10 Pack)	0.9 - 220 mU/L	0.25 mU/L	25 µL	Serum, Plasma	2h 30m
90080	Insulin Mouse Ultra Sensitive ELISA	0.1-12.8 ng/mL or 1-64 ng/mL	0.05 ng/mL	5 µL	Serum, Plasma, Cell Culture	3h 10m



Trusted by the leading diabetes research centers

The leading diabetes research centers rely on our products, including institutions like: Harvard, Inserm, NIH, Amgen

Cat #	Product Name	Assay Range	Sensitivity	Sample Size	Sample Type	Assay Time
90082	Insulin Mouse Ultra Sensitive ELISA (10 Pack)	0.1-12.8 ng/mL or 1-64 ng/mL	0.05 ng/mL	5 µL	Serum, Plasma, Cell Culture	3h 10m
90186	Insulin Rabbit ELISA	0.1-12.8 ng/mL or 1-64 ng/mL	0.05 ng/mL	5 µL	Serum, Plasma, Cell Culture	3h 10m
90010	Insulin Rat ELISA	0.156-10.0 ng/mL	0.156 ng/mL	5 µL	Serum, Plasma, Cell Culture	Overnight
90060	Insulin Rat Ultra Sensitive ELISA	0.1-12.8 ng/mL or 1-64 ng/mL	0.05 ng/mL	5 µL	Serum, Plasma, Cell Culture	3h 10m
90062	Insulin Rat Ultra Sensitive ELISA (10 Pack)	0.1-12.8 ng/mL or 1-64 ng/mL	0.05 ng/mL	5 µL	Serum, Plasma, Cell Culture	3h 10m
80968	Leptin Human ELISA	1-100 ng/mL	0.42 ng/mL	20 µL	Serum	1h 45m
90030	Leptin Mouse ELISA	0.2-12.8 ng/mL	200 pg/mL	5 µL	Serum, Plasma, Cell Culture	Overnight
90040	Leptin Rat ELISA	0.2-12.8 ng/mL	200 pg/mL	5 µL	Serum, Plasma, Cell Culture	Overnight
80729	NGAL Human ELISA	0.625-20 ng/mL	0.18 ng/mL	10 µL	Serum, Plasma	1h 10m
80655	NGAL Mouse ELISA	0.125-4 ng/mL	0.065 ng/mL	2 µL	Urine, Serum, Plasma	1h 20m
80687	NGAL Rat ELISA	0.25-8 ng/mL	0.20 ng/mL	2 µL	Serum, Plasma	1h 50m
90107	Proinsulin Intact Human Chemiluminescence	0.1-100 pmol/L	0.02 pmol/L	50 µL	Serum, Plasma	3h
90105	Proinsulin Intact Human ELISA	0.3-100 pmol/L	0.3 pmol/L	50 µL	Serum, Plasma	2h 15m
90112	Proinsulin Total Human Chemiluminescence	0.25-220 pmol/L	0.25 pmol/L	50 µL	Serum, Plasma	3h



LEPTIN ELISA KITS

Since the discovery of leptin in 1994, it has become an important therapeutic target in the fight against diabetes and obesity.

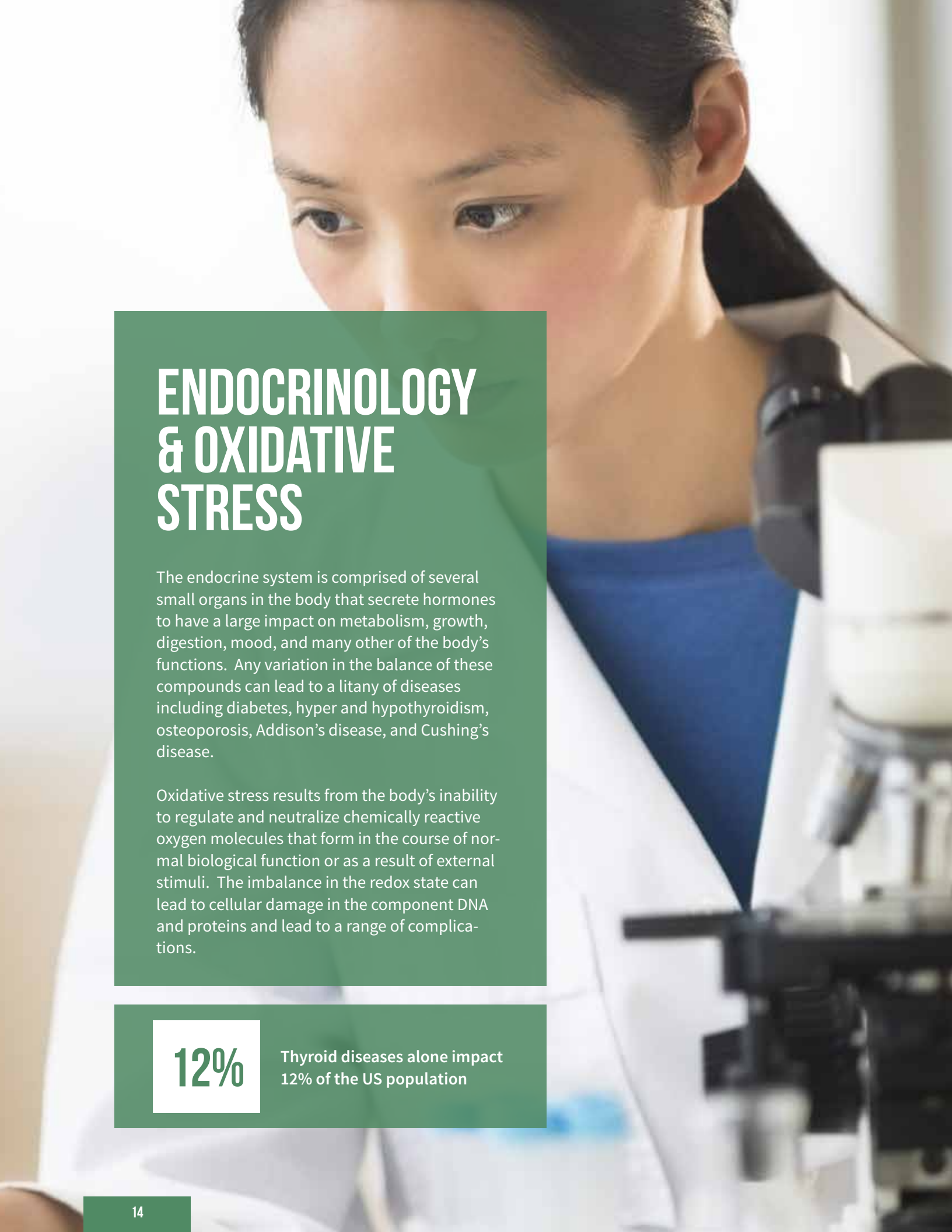
Our mouse and rat leptin kits feature a very high sensitivity of 0.2 ng / mL using only a 5 μ L sample volume. In addition, our kits are easy to use, and no pretreatment of samples is needed.

GIP ACTIVE AND TOTAL ELISA KITS

GIP (Gastric Inhibitory Polypeptide) is a gastrointestinal hormone that modulates physiological insulin secretion.

Our recently launched GIP Active Mouse ELISA kit uses only 15 μ L sample volume, while most other kits on the market use 100 μ L. The kit is also highly specific, with close to 100% cross-reactivity with mouse GIP (1-42), and does not cross-react with mouse GIP (3-42).

Cat #	Product Name	Assay Range	Sensitivity	Sample Size	Sample Type	Assay Time
90110	Proinsulin Total Human ELISA	0.5-220 pmol/L	0.5 pmol/L	50 μ L	Serum, Plasma	3h 15m
81500	PYY Human ELISA	0.08-20 ng/mL	0.08 ng/mL	50 μ L	Serum, Plasma	Overnight
81501	PYY Mouse ELISA	0.15-12.5 ng/mL	0.15 ng/mL	25 μ L	Serum, Plasma	Overnight
81502	PYY Rat ELISA	0.15-12.5 ng/mL	0.15 ng/mL	25 μ L	Serum, Plasma	Overnight
80588	Resistin Human ELISA	20-1,000 pg/mL	12 pg/mL	10 μ L	Serum, Plasma, Fluid	3h
80733	Retinol Binding Protein Human ELISA	1.56-100 ng/mL	1.17 ng/mL	5 μ L	Urine, Serum, Plasma	1h 20m
80658	Retinol Binding Protein Mouse ELISA	0.63-20 ng/mL	0.16 ng/mL	5 μ L	Serum, Plasma	1h 10m
80734	Serum Amyloid A Human ELISA	1.56-100 ng/mL	0.5 ng/mL	6 μ L	Serum, Plasma	1h 30m
80659	Serum Amyloid A Mouse ELISA	31.3-2,000 ng/mL	11.0 ng/mL	5 μ L	Serum, Plasma	1h 40m
80593	Vaspin Human ELISA	10-1,000 pg/mL	4 pg/mL	25 μ L	Serum	3h 30m

A woman with dark hair tied back, wearing a white lab coat over a blue top, is looking through a microscope. The background is softly blurred, showing a laboratory setting.

ENDOCRINOLOGY & OXIDATIVE STRESS

The endocrine system is comprised of several small organs in the body that secrete hormones to have a large impact on metabolism, growth, digestion, mood, and many other of the body's functions. Any variation in the balance of these compounds can lead to a litany of diseases including diabetes, hyper and hypothyroidism, osteoporosis, Addison's disease, and Cushing's disease.

Oxidative stress results from the body's inability to regulate and neutralize chemically reactive oxygen molecules that form in the course of normal biological function or as a result of external stimuli. The imbalance in the redox state can lead to cellular damage in the component DNA and proteins and lead to a range of complications.

12%

Thyroid diseases alone impact 12% of the US population

ENDOCRINOLOGY & OXIDATIVE STRESS

Browse our wide selection of assays for endocrinology & oxidative stress research, including assays that measure corticosterone, growth hormone, progesterone, TSH, and more.

FEATURED PRODUCT: CORTICOSTERONE ASSAY KITS

Corticosterone is secreted by the adrenal cortices, and its concentration can be used to survey the response of mice and rats to laboratory stimuli such as drugs or disease states.

Crystal Chem has corticosterone ELISA kits for mouse and rat research that work across a wide working range, requires no extraction, and uses only 10 µL of sample without dilution.

Mouse and Rat Corticosterone ELISA Specs

	Mouse Kit	Rat Kit
Sample Vol	10 µL	10 µL
Assay Time	2.5 hr	2.5 hr
Calibrators	6, Ready to use standards	6, Ready to use standards
Range	15-2,250 ng/mL	15-2,250 ng/mL
Sensitivity	6.1 ng/mL	6.1 ng/mL

Cat #	Product Name	Assay Range	Sensitivity	Sample Size	Sample Type	Assay Time
80584	Acid Labile Subunit Human ELISA	1.5-40 mU/mL	0.23 mU/mL	10 µL	Serum, Plasma	3h
80249	Adenosine Deaminase Human Assay	0-200 U/L	N/A	5 µL	Serum, Plasma	11m
80951	Aldosterone Human ELISA	15-1,000 pg/mL	15 pg/mL	50 µL	Serum, Plasma	1h 20m
80697	Alpha 1-Antichymotrypsin Human ELISA	6.25-400 ng/mL	2.52 ng/mL	2 µL	Serum, Plasma	1h 20m
80556	Corticosterone Mouse ELISA	15-2,250 ng/mL	6.1 ng/mL	10 µL	Serum, Plasma	2h 30m
80554	Corticosterone Rat ELISA	15-2,250 ng/mL	6.1 ng/mL	10 µL	Serum, Plasma	2h 30m
80957	Cortisol Human ELISA (Saliva)	1-100 ng/mL	1 ng/mL	50 µL	Saliva	1h
80956	Cortisol Human ELISA (Serum)	0.4-40 µg/dL	0.4 µg/dL	20 µL	Serum	1h
80961	Dihydrotestosterone Human ELISA	25-2,500 pg/mL	10 pg/mL	50 µL	Serum	1h 15m
80962	Estradiol Human ELISA	10-1,000 pg/mL	10 pg/mL	25 µL	Serum	1h 10m
80548	Estradiol Rat ELISA	5-1280 pg/mL	2.5 pg/mL	75 µL	Serum	1h 30m
80567	Estrone-3-Sulfate Horse ELISA	5-1,000 ng/mL	0.14 ng/mL	20 µL	Serum	2h

ENDOCRINOLOGY & OXIDATIVE STRESS

Used in research around the world

Our products have been cited in
1000's of publications by researchers
around the world



Cat #	Product Name	Assay Range	Sensitivity	Sample Size	Sample Type	Assay Time
80964	Ferritin Human ELISA	10-800 ng/mL	7.5 ng/mL	20 µL	Serum	40m
80636	Ferritin Mouse ELISA	12.5-400 ng/mL	2.6 ng/mL	10 µL	Urine, Serum, Plasma	1h 20m
80672	Ferritin Rat ELISA	12.5-400 ng/mL	3.1 ng/mL	10 µL	Serum, Plasma	1h 20m
80712	Fetuin Human ELISA	6.25-200 ng/mL	0.85 ng/mL	5 µL	Serum, Plasma	50m
80676	Glutathione S-Transferase (Yb1) Rat ELISA	3.13-100 ng/mL	1.03 ng/mL	5 µL	Urine, Serum, Plasma	2h 10m
80675	Glutathione S-Transferase Alpha Rat ELISA	3.13-100 ng/mL	1.5 ng/mL	5 µL	Urine, Serum, Plasma	3h 10m
80587	Growth Hormone Mouse ELISA	0.15-9.0 ng/mL	0.04 ng/mL	25 µL	Serum	3h
80586	Growth Hormone Rat ELISA	0.15-9.0 ng/mL	0.04 ng/mL	25 µL	Serum	3h
80714	Haptoglobin Human ELISA	3.13-200 ng/mL	0.82 ng/mL	5 µL	Serum, Plasma	35m
80639	Haptoglobin Mouse ELISA	1.95-125 ng/mL	0.59 ng/mL	5 µL	Serum, Plasma	40m
80677	Haptoglobin Rat ELISA	1.95-125 ng/mL	1.05 ng/mL	5 µL	Serum, Plasma	40m
80715	Hemoglobin Human ELISA	6.25-200 ng/mL	1.11 ng/mL	5 µL	Serum, Plasma	50m
80640	Hemoglobin Mouse ELISA	12.5-400 ng/mL	3.11 ng/mL	5 µL	Serum, Plasma	1h 40m
80678	Hemoglobin Rat ELISA	3.13-200 ng/mL	1.84 ng/mL	5 µL	Serum, Plasma	1h 40m



IGF-1 ELISA KITS

Typically IGF-1 is complexed with range of binding proteins, and most assays have poor sensitivity from high interferences. Crystal Chem's IGF-1 ELISA kits utilize a unique approach to isolate IGF-1 from the bound proteins to give a high-quality assay with a better correlation to actual IGF-1 values.

Our ELISAs can measure IGF-1 concentrations from 5 µL (mouse or rat) / 10 µL (human) samples with a sensitivity of < 0.09 ng/mL and no extraction is required.

Mouse and Rat IGF-1 ELISA Specs

	Mouse Kit	Rat Kit
Sample Vol	5 µL	5 µL
Assay Time	2 hr	2 hr
Calibrators	5, Ready to use standards	5, Ready to use standards
Range	0.5 - 18 ng/mL	0.5 - 18 ng/mL
Sensitivity	0.029 ng/mL	0.029 ng/mL

Cat #	Product Name	Assay Range	Sensitivity	Sample Size	Sample Type	Assay Time
80716	Hemopexin Human ELISA	6.25-200 ng/mL	2.23 ng/mL	5 µL	Serum, Plasma	1h 10m
80641	Hemopexin Mouse ELISA	12.5-400 ng/mL	4.27 ng/mL	5 µL	Serum, Plasma	1h 30m
80679	Hemopexin Rat ELISA	6.25-400 ng/mL	1.36 ng/mL	5 µL	Serum, Plasma	1h 20m
80958	HCG Human ELISA	2.5 -500 IU/L	0.7 IU/L	25 µL	Serum	1h 10m
80585	HGH Ultra Sensitive Human ELISA	50-1,000 pg/mL	11.5 pg/mL	10 µL	Serum, Plasma	3h 15m
80572	IGF-1 Human ELISA	2-50 ng/mL	0.09 ng/mL	10 µL	Serum, Plasma, Cell Culture	1h 45m
80574	IGF-1 Mouse ELISA	0.5-18 ng/mL	0.029 ng/mL	5 µL	Serum, Plasma, Cell Culture	2h
80573	IGF-1 Rat ELISA	0.5-18 ng/mL	0.029 ng/mL	5 µL	Serum, Plasma, Cell Culture	2h
80575	IGF-2 Human ELISA	0.45-9 ng/mL	0.02 ng/mL	5 µL	Urine, Serum, Saliva, Plasma, Cerebrospinal Fluid	3h
80576	IGFBP-1 Human ELISA	0.1-8 ng/mL	0.02 ng/mL	20 µL	Serum, Saliva, Plasma, Fluids, Cell Culture	1h 45m
80577	IGFBP-2 Human ELISA	2-80 ng/mL	0.2 ng/mL	10 µL	Serum, Saliva, Plasma, Fluids, Cell Culture	1h 45m
80579	IGFBP-2 Mouse ELISA	31.25-2,000 pg/mL	10 pg/mL	5 µL	Serum	3h
80578	IGFBP-2 Rat ELISA	31.25-2,000 pg/mL	10 pg/mL	5 µL	Serum	3h

ENDOCRINOLOGY & OXIDATIVE STRESS

Cat #	Product Name	Assay Range	Sensitivity	Sample Size	Sample Type	Assay Time
80580	IGFBP-3 Human ELISA	0.4-30 ng/mL	0.03 ng/mL	5 µL	Serum, Plasma	2h 30m
80582	IGFBP-3 Mouse ELISA	0.39-25 ng/mL	0.09 ng/mL	5 µL	Serum, Plasma, Cell Culture	2h 30m
80581	IGFBP-3 Rat ELISA	0.39-25 ng/mL	0.09 ng/mL	5 µL	Serum, Plasma, Cell Culture	2h 30m
80595	IGFBP-6 Human ELISA	0.1 - 10 ng/mL	0.03 ng/mL	10 µL	Serum, Plasma, Fluids, Cell Culture	3h
80969	Luteinizing Hormone Human ELISA	1-200 mIU/mL	1 mIU/mL	50 µL	Serum	1h 10m
80728	Myoglobin Human ELISA	2.5-80 ng/mL	0.54 ng/mL	50 µL	Serum, Plasma	1h 40m
80654	Myoglobin Mouse ELISA	9.4-300 ng/mL	5.2 ng/mL	25 µL	Serum, Plasma	1h 40m
80686	Myoglobin Rat ELISA	6.25-200 ng/mL	3.62 ng/mL	50 µL	Serum, Plasma	1h 25m
80970	Plasma Renin Activity Human ELISA	0.2-60 ng/mL Ang-I	0.15 ng/mL Ang-1	50 µL	Plasma	3h 30m
80732	Prealbumin Human ELISA	15.6-500 ng/mL	4.0 ng/mL	5 µL	Serum, Plasma	1h 40m
80657	Prealbumin Mouse ELISA	15.6-500 ng/mL	4.0 ng/mL	5 µL	Serum, Plasma	1h
80689	Prealbumin Rat ELISA	15.6-500 ng/mL	4.5 ng/mL	5 µL	Serum, Plasma	1h
80972	Progesterone Human ELISA (Serum)	0.1-50 ng/mL	0.1 ng/mL	50 µL	Serum	1h 55m
80559	Progesterone Mouse ELISA	0.4-100 ng/mL	0.04 ng/mL	10 µL	Serum, Plasma	1h 30m
80558	Progesterone Rat ELISA	0.4-100 ng/mL	0.04 ng/mL	10 µL	Serum, Plasma	1h 30m
80562	Prolactin Dog ELISA	2.5-80 ng/mL	0.4 ng/mL	25 µL	Serum	3h 30m
80560	Prolactin Rat ELISA	5-80 ng/mL	0.6 ng/mL	25 µL	Serum	3h 30m
80977	Prostate-Specific Antigen Free Human ELISA	0.1-15 ng/mL	0.05 ng/mL	50 µL	Serum	1h 10m
80976	Prostate-Specific Antigen Total Human ELISA	0.5-100 ng/mL	0.1 ng/mL	25 µL	Serum	1h 40m
80978	Sex Hormone Binding Globulin Human ELISA	3.3-295 nmol/L	0.1 nmol/L	10 µL	Serum	55m
80552	Testosterone Mouse ELISA	0.1-25 ng/mL	0.066 ng/mL	10 µL	Serum, Plasma	1h 30m
80550	Testosterone Rat ELISA	0.1-25 ng/mL	0.066 ng/mL	10 µL	Serum, Plasma	1h 30m
80981	Testosterone Total Human ELISA (Saliva)	2-800 pg/mL	1 pg/mL	100 µL	Saliva	1h 40m



EASY ONLINE ORDERING AT CRYSTALCHEM.COM

You can browse all our products, see specs, and order online at www.crystalchem.com.

Cat #	Product Name	Assay Range	Sensitivity	Sample Size	Sample Type	Assay Time
80979	Testosterone Total Human ELISA (Serum)	0.1-18 ng/mL	0.05 ng/mL	10 µL	Serum	1h 55m
80566	Thyroid Stimulating Hormone Dog ELISA	0.2-5.2 ng/mL	0.01 ng/mL	100 µL	Serum, Plasma	2h 30m
80982	Thyroid Stimulating Hormone Human ELISA	0.2-30 µIU/mL	0.1 µIU/mL	50 µL	Serum	1h 10m
80564	Thyroid Stimulating Hormone Rat ELISA	2.5-80 ng/mL	0.1 ng/mL	25 µL	Serum	Overnight
80984	Thyroxine Free Human ELISA	2-95 pg/mL	1 pg/mL	25 µL	Serum	1h 10m
80983	Thyroxine Total Human ELISA	1-32 µg/dL	0.6 µg/dL	20 µL	Serum	45m
80736	Transferrin Human ELISA	9.38-600 ng/mL	2.55 ng/mL	5 µL	Serum, Plasma	1h 10m
80661	Transferrin Mouse ELISA	3.13-100 ng/mL	0.88 ng/mL	2 µL	Serum, Plasma	1h 10m
80693	Transferrin Rat ELISA	6.25-400 ng/mL	1.15 ng/mL	5 µL	Serum, Plasma	40m
80986	Triiodothyronine Free Human ELISA	1-40 pg/mL	0.3 pg/mL	25 µL	Serum	1h 10m
80985	Triiodothyronine Total Human ELISA	0.2-10 ng/mL	0.2 ng/mL	50 µL	Serum	1h 25m
80987	Vitamin D (25-OH) Total Human Assay	10-160 ng/mL	5.5 ng/mL	25 µL	Serum, Plasma	1h 45m

A male scientist with dark hair, wearing a white lab coat over a pink shirt and a dark tie, is looking down at his work in a laboratory. The background is slightly blurred, showing other people and laboratory equipment.

IMMUNOLOGY

Immunology is the study of the immune system with the focus of understanding all the functions and interactions within the system. Primary immunodeficiency diseases include at least 170 heredity disorders, and there are at least 80 autoimmune diseases including allergies, rheumatoid arthritis, inflammatory bowel disease, and multiple sclerosis that affect up to 50 million Americans.

Crystal Chem provides high-quality research kits to supply the immunology community in many areas of research in human, mouse, and rat models. The kits are highly sensitive, require small sample volumes, have wide dynamic ranges, and have very low CVs.

**50
MILLION**

There are over 80 auto-immune diseases that affect 50 million Americans

IMMUNOLOGY

Browse our wide selection of assays for immunology research, including assays that measure chemerin, progranulin, thiostatin, and more.

FEATURED PRODUCT: CHEMERIN ELISA KITS

Chemerin is cell signalling protein thought to play an important role in obesity and insulin resistance. Chemerin levels have been observed to be significantly different between unaffected individuals and those with type-2 diabetes, and as such, could be potentially useful in identifying individuals with metabolic syndrome and insulin resistance.

supernatants, breast milk, and cerebrospinal fluids. The kits are highly accurate with CVs of less than 10% and highly sensitive (5 pg/mL). Additionally, the assays are easy to use and only use a 5 µL sample.

Our Chemerin ELISA kits can be used with a wide variety of samples including cell culture

Cat #	Product Name	Assay Range	Sensitivity	Sample Size	Sample Type	Assay Time
80696	Alpha 1-Acid Glycoprotein Human ELISA	5-320 ng/mL	1.1 ng/mL	5 µL	Urine, Serum, Plasma	1h 5m
80663	Alpha 1-Acid Glycoprotein Rat ELISA	12.5-400 ng/mL	3.3 ng/mL	5 µL	Urine, Serum, Plasma	1h 20m
80698	Alpha 1-Antitrypsin Human ELISA	7.81-500 ng/mL	1.1 ng/mL	5 µL	Urine, Serum, Plasma	1h 50m
80631	Alpha 1-Antitrypsin Mouse ELISA	6.25-200 ng/mL	1.5 ng/mL	2 µL	Serum, Plasma	2h 10m
80703	Beta 2-Glycoprotein Human ELISA	3.125-200 ng/mL	2.10 ng/mL	5 µL	Urine, Serum, Plasma	1h 30m
80589	Chemerin Human ELISA	25-600 pg/mL	5 pg/mL	5 µL	Urine, Serum, Plasma, Cerebrospinal Fluid, Cell Culture, Breast Milk, Amniotic Fluid	2h 30m
80705	Complement 3 Human ELISA	12.5-400 ng/mL	2.53 ng/mL	5 µL	Serum, Plasma	1h
80632	Complement 3 Mouse ELISA	3.13 -200 ng/mL	1.4 ng/mL	5 µL	Serum, Plasma	50m
80667	Complement 3 Rat ELISA	12.5-800 ng/ mL	4.4 ng/mL	5 µL	Serum, Plasma	50m
80714	Haptoglobin Human ELISA	3.13-200 ng/mL	0.82 ng/mL	5 µL	Serum, Plasma	35m

IMMUNOLOGY

Cat #	Product Name	Assay Range	Sensitivity	Sample Size	Sample Type	Assay Time
80639	Haptoglobin Mouse ELISA	1.95-125 ng/mL	0.59 ng/mL	5 µL	Serum, Plasma	40m
80677	Haptoglobin Rat ELISA	1.95-125 ng/mL	1.05 ng/mL	5 µL	Serum, Plasma	40m
80617	Human Monoclonal Antibody Isotyping Kit	N/A	10 ng/mL	4 µL	Cell Culture, Ascites Fluid	10m
80717	IgA Human ELISA	12.5-800 ng/mL	6.5 ng/mL	5 µL	Serum, Plasma	1h 10m
80642	IgA Mouse ELISA	12.5-400 ng/mL	0.92 ng/mL	5 µL	Serum, Plasma	1h 40m
80680	IgA Rat ELISA	31.25-1,000 ng/mL	7.94 ng/mL	5 µL	Serum, Plasma	1h 10m
80718	IgD Human ELISA	6.25-400 ng/mL	3.2 ng/mL	2 µL	Serum, Plasma	1h 20m
80719	IgE Human ELISA	3.13-200 ng/mL	0.92 ng/mL	2 µL	Serum, Plasma	1h 20m
80643	IgE Mouse ELISA	6.25-400 ng/mL	1.92 ng/mL	5 µL	Serum, Plasma	1h 10m
80681	IgE Rat ELISA	1-32 ng/mL	0.22 ng/mL	10 µL	Serum, Plasma	2h 10m
80720	IgG Human ELISA	15.6-500 ng/mL	1.8 ng/mL	2 µL	Serum, Plasma	1h 30m
80644	IgG Mouse ELISA	9.4-600 ng/mL	2.1 ng/mL	5 µL	Serum, Plasma	1h 40m
80682	IgG Rat ELISA	25-800 ng/mL	3.62 ng/mL	2 µL	Serum, Plasma	1h 40m
80646	IgG1 Mouse ELISA	6.25-200 ng/mL	0.65 ng/mL	5 µL	Serum, Plasma	1h 30m
80647	IgG2A Mouse ELISA	12.5-400 ng/mL	0.87 ng/mL	5 µL	Serum, Plasma	1h 30m
80648	IgG2B Mouse ELISA	6.25-200 ng/mL	0.88 ng/mL	5 µL	Serum, Plasma	1h 10m
80649	IgG2C Mouse ELISA	3.13-200 ng/mL	0.4 ng/mL	5 µL	Serum, Plasma	1h 10m
80650	IgG3 Mouse ELISA	12.5-400 ng/mL	2.85 ng/mL	5 µL	Serum, Plasma	1h 30m
80721	IgM Human ELISA	7.8-500 ng/mL	2.54 ng/mL	5 µL	Serum, Plasma	1h 40m
80651	IgM Mouse ELISA	25-800 ng/mL	2.8 ng/mL	5 µL	Serum, Plasma	1h 40m
80683	IgM Rat ELISA	31.25-1,000 ng/mL	2.85 ng/mL	5 µL	Serum, Plasma	1h 10m
80722	Kappa Human ELISA	6.25-200 ng/mL	1.56 ng/mL	2 µL	Serum, Plasma	1h
80725	Lactoferrin Human ELISA	3.13-100 ng/mL	0.73 ng/mL	5 µL	Serum, Plasma, Milk	1h 10m
80726	Lambda Human ELISA	6.25-200 ng/mL	1.33 ng/mL	2 µL	Serum, Plasma	1h



Staying on the cutting edge of research

Crystal Chem's commitment to high quality research allows us to deliver the best assays on the market



Cat #	Product Name	Assay Range	Sensitivity	Sample Size	Sample Type	Assay Time
80612	Mouse Monoclonal Antibody Isotyping Kit	N/A	10 ng/mL	4 µL	Cell Culture, Ascites Fluid	10m
80619	Mouse Monoclonal Antibody Isotyping Kit, RapidYield (5 Kit Pack)	N/A	10 ng/mL	4 µL	Cell Culture, Ascites Fluid	10m
80727	Myeloperoxidase Human ELISA	1.88-120 ng/mL	0.99 ng/mL	30 µL	Serum, Plasma	1h 30m
80729	NGAL Human ELISA	0.625-20 ng/mL	0.18 ng/mL	10 µL	Serum, Plasma	1h 10m
80655	NGAL Mouse ELISA	0.125-4 ng/mL	0.065 ng/mL	2 µL	Urine, Serum, Plasma	1h 20m
80687	NGAL Rat ELISA	0.25-8 ng/mL	0.25 ng/mL	2 µL	Serum, Plasma	1h 50m
80590	Progranulin Human ELISA	0.075-2.5 ng/mL	0.018 ng/mL	10 µL	Serum, Plasma, Cell Culture	2h
80977	Prostate-Specific Antigen Free Human ELISA	0.1-15 ng/mL	0.05 ng/mL	50 µL	Serum	1h 10m
80976	Prostate-Specific Antigen Total Human ELISA	0.5-100 ng/mL	0.1 ng/mL	25 µL	Serum	1h 40m
80618	Rat Monoclonal Antibody Isotyping Kit, RapidYield (5 Kit Pack)	N/A	10 ng/mL	4 µL	Cell Culture, Ascites Fluid	10m
80734	Serum Amyloid A Human ELISA	1.56-100 ng/mL	0.5 ng/mL	6 µL	Serum, Plasma	1h 30m
80659	Serum Amyloid A Mouse ELISA	31.3-2,000 ng/mL	11.0 ng/mL	5 µL	Serum, Plasma	1h 40m
80692	Thiostatin Rat ELISA	6.25-400 ng/mL	5.22 ng/mL	5 µL	Serum, Plasma	2h 10m



TOXICOLOGY

Toxicology is a multidisciplinary field centered on the study of the adverse affects of chemicals on biological organisms. Primary areas of research include the identification, assessment, and understanding of proper pharmaceutical dosages or accidental chemical exposure.

Crystal Chem supplies research kits to chemists, biologists, and toxicologists to support their studies in determining the detrimental effects of compounds to biological systems.

We offer kits for the research of toxicology in mice, rats, and humans. The kits are highly sensitive, require small sample volumes, have wide dynamic ranges, and have very low CVs.



Crystal Chem provides high-quality research kits to help in the research of toxicology.

TOXICOLOGY

Browse our wide selection of assays for toxicology research, including assays that measure bile acids, creatinine, haptoglobin, KIM-1, NGAL, and more.

FEATURED PRODUCT: MOUSE AND RAT BILE ACIDS KITS

Crystal Chem's line of bile acid kits offers an easy, quick, and accurate method to monitor liver function in a wide variety of species and samples. Kits for human, mouse, rat, hamster, and dog samples allow researchers to accurately measure total bile acids (including primary, secondary, and tertiary bile acids) in a variety of sample types.

The kits use only a 15 µL sample volume and can be run manually in a 96-well plate or via automation on a clinical chemistry analyzer.

Simple 3-Step Procedure

- 1 Add 15 µL of sample and 1st reagent to wells. Incubate at 37C.
- 2 Wait 5 min and take 1st reading. Add 2nd reagent and incubate at 37C
- 3 Add stop reagent and then take 2nd reading and calculate total bile acids

Cat #	Product Name	Assay Range	Sensitivity	Sample Size	Sample Type	Assay Time
80695	Albumin Human ELISA	6.25-200 µg/mL	1.90 ng/mL	2 µL	Urine, Serum, Plasma	1h 40m
80630	Albumin Mouse ELISA	7.8-500 ng/mL	1.70 ng/mL	2 µL	Urine, Serum, Plasma	1h 10m
80662	Albumin Rat ELISA	6.25-400 ng/mL	1.62 ng/mL	2 µL	Urine, Serum, Plasma	1h 10m
80696	Alpha 1-Acid Glycoprotein Human ELISA	5-320 ng/mL	1.1 ng/mL	5 µL	Urine, Serum, Plasma	1h 5m
80663	Alpha 1-Acid Glycoprotein Rat ELISA	12.5-400 ng/mL	3.3 ng/mL	5 µL	Urine, Serum, Plasma	1h 20m
80699	Alpha 1-Microglobulin Human ELISA	12.5-400 ng/mL	2.5 ng/mL	2 µL	Serum, Plasma	2h 10m
80700	Alpha 2-Macroglobulin Human ELISA	20-640 ng/L	2.41 ng/mL	5 µL	Serum, Plasma	1h 20m
80664	Alpha 2-Macroglobulin Rat ELISA	6.25-400 ng/mL	2.33 ng/mL	5 µL	Serum, Plasma	1h 20m
80953	Beta 2-Microglobulin Human ELISA	0.2-10 mg/L	0.1 mg/L	20 µL	Serum	1h 15m
80666	Beta 2-Microglobulin Rat ELISA	0.156-5 ng/mL	0.84 ng/mL	2 µL	Urine, Serum, Plasma	1h 30m
80501	Bile Acids Total Dog Assay	0-200 µmol/L	N/A	15 µL	Serum, Plasma	< 15m
80511	Bile Acids Total Hamster Assay	0-200 µmol/L	N/A	15 µL	Serum, Plasma	< 15m

MOUSE AND RAT CREATININE KITS

Our creatinine assays use proprietary enzymatic technology that offers significant advantages over the traditional Jaffe method. This is particularly true in mouse and rat samples, in which the Jaffe method has been shown to significantly overestimate creatinine levels.⁽¹⁾ The avoidance of picric acid (a hazardous component) in the reagents also makes our assays much more user-safe.

Enzymatic Method	Jaffe Method
Accurate (vs. HPLC)	Significantly overestimates in mice and rats ⁽¹⁾
No interference	Interference from sample components
Non-hazardous	Hazardous (picric acid)
Does not stain	Can leave stains

¹ Keppler, A., et al. "Plasma creatinine determination in mice and rats: an enzymatic method compares favorably with a high-performance liquid chromatography assay." *Kidney international* 71.1 (2007): 74-78.

Cat #	Product Name	Assay Range	Sensitivity	Sample Size	Sample Type	Assay Time
80268	Bile Acids Total Human Assay	0-200 µmol/L	N/A	15 µL	Serum, Plasma	10m
80471	Bile Acids Total Mouse Assay	0-200 µmol/L	N/A	15 µL	Serum, Plasma	< 15m
80461	Bile Acids Total Rat Assay	0-200 µmol/L	N/A	15 µL	Serum, Plasma	< 15m
80669	Clusterin Rat ELISA	12.5-800 ng/mL	3.4 ng/mL	5 µL	Urine, Serum, Plasma	1h 40m
80189	Creatinine Human Assay (Enzymatic)	0.15-141 mg/dL	0.15 mg/dL	8 µL	Serum, Urine	10m
80350	Creatinine Mouse Assay (Enzymatic)	0.15-141 mg/dL	0.15 mg/dL	< 10 µL	Serum, Urine	< 30m
80340	Creatinine Rat Assay (Enzymatic)	0.15-141 mg/dL	0.15 mg/dL	< 10 µL	Serum, Urine	< 30m
80738	Cystatin C Mouse ELISA	0.13-4 ng/mL	0.13 ng/mL	2 µL	Serum, Plasma	2h 10m
80714	Haptoglobin Human ELISA	3.13-200 ng/mL	0.82 ng/mL	5 µL	Serum, Plasma	35m
80639	Haptoglobin Mouse ELISA	1.95-125 ng/mL	0.59 ng/mL	5 µL	Serum, Plasma	40m
80677	Haptoglobin Rat ELISA	1.95-125 ng/mL	1.05 ng/mL	5 µL	Serum, Plasma	40m
80723	KIM-1 Human ELISA	0.03-1 ng/mL	0.054 ng/mL	50 µL	Urine, Serum, Plasma	1h 50m
80652	KIM-1 Mouse ELISA	0.078-5 ng/mL	0.052 ng/mL	35 µL	Urine, Serum, Plasma	2h 40m
80684	KIM-1 Rat ELISA	0.1 -10 ng/mL	0.039 ng/mL	50 µL	Urine, Serum, Plasma	2h 50m



EASY ONLINE ORDERING AT CRYSTALCHEM.COM

You can browse all our products, see specs, and order online at www.crystalchem.com.

Cat #	Product Name	Assay Range	Sensitivity	Sample Size	Sample Type	Assay Time
80685	L-FABP Rat ELISA	3.13-200 ng/mL	1.28 ng/mL	20 µL	Serum, Plasma	1h 20m
80728	Myoglobin Human ELISA	2.5-80 ng/mL	0.54 ng/mL	50 µL	Serum, Plasma	1h 40m
80654	Myoglobin Mouse ELISA	9.4-300 ng/mL	5.2 ng/mL	25 µL	Serum, Plasma	1h 40m
80686	Myoglobin Rat ELISA	6.25-200 ng/mL	3.62 ng/mL	50 µL	Serum, Plasma	1h 25m
80729	NGAL Human ELISA	0.625-20 ng/mL	0.18 ng/mL	10 µL	Serum, Plasma	1h 10m
80655	NGAL Mouse ELISA	0.125-4 ng/mL	0.065 ng/mL	2 µL	Urine, Serum, Plasma	1h 20m
80687	NGAL Rat ELISA	0.25-8 ng/mL	0.20 ng/mL	2 µL	Serum, Plasma	1h 50m
80732	Prealbumin Human ELISA	15.6-500 ng/mL	4.0 ng/mL	5 µL	Serum, Plasma	1h 40m
80657	Prealbumin Mouse ELISA	15.6-500 ng/mL	4.0 ng/mL	5 µL	Serum, Plasma	1h
80689	Prealbumin Rat ELISA	15.6-500 ng/mL	4.5 ng/mL	5 µL	Serum, Plasma	1h
80219	Urinary (NAG) Human Assay	0-200 IU/L	N/A	10 µL	Urine	6m
80400	Urinary (NAG) Mouse Assay	0-200 IU/L	N/A	10 µL	Urine	6m
80390	Urinary (NAG) Rat Assay	0-200 IU/L	N/A	10 µL	Urine	6m
80987	Vitamin D (25-OH) Total Human Assay	10-160 ng/mL	5.5 ng/mL	25 µL	Serum, Plasma	1h 45m
80737	Vitamin D Binding Protein (GC Globulin) Human ELISA	6.25-200 ng/mL	2.17 ng/mL	5 µL	Serum, Plasma	1h 10m
80694	Vitamin D Binding Protein (GC Globulin) Rat ELISA	3.13-100 ng/mL	0.87 ng/mL	5 µL	Serum, Plasma	1h 20m
80737	Vitamin D Binding Protein (GC Globulin) Human ELISA	6.25-200 ng/mL	2.17 ng/mL	5 µL	Plasma, Serum	1h 10m
80694	Vitamin D Binding Protein (GC Globulin) Rat ELISA	3.13-100 ng/mL	0.87 ng/mL	5 µL	Plasma, Serum	1h 20m



FOOD ALLERGEN KITS

Ensuring safe food supplies has led to waves of new regulations for processed foods. In part, manufacturers are under increased scrutiny to identify or exclude potential allergens from their products.

Crystal Chem, in partnership with Morinaga Institute, offers high quality ELISA kits for the detection of allergens. Using an innovative, patented extraction solution, our kits achieve a high recovery of allergens in both raw and processed food.

Our Gluten kit has been cited by the FDA as one of the methods it will use to determine compliance to the Gluten Labeling Rule.



Our kits are used by analytical labs and large food companies around the world

FOOD ALLERGEN KITS

Browse our selection of assays for food testing, including kits that measure gluten, casein, egg, peanut, soy, and more.

CHOOSE BY APPLICATION: ELISA, RAPID TEST EASY, OR RAPID TEST PRO II KITS

ELISA kits are quantitative assays for raw and processed food.

Rapid tests are qualitative/semi-quantitative assays. Easy tests are designed for rinse water and soluble proteins. Pro II kits are designed for raw and processed foods.

ELISA Kits are quantitative and used to quantify levels of allergens in raw and processed food. They use an innovative extraction method to accurately detect allergen levels.

Rapid Test Pro II Kits are semi-quantitative tests used to quantify levels of allergens in raw and processed food.

Rapid Test Easy Kits are semi-quantitative tests used to quantify levels of soluble proteins, such as those found in rinse water samples. They are not recommended for processed foods.

Cat #	Product Name	Assay Range	Sensitivity	Sample Size	Sample Type	Assay Time
M2112	Beta-lactoglobulin ELISA - Type II	0.31-20 ppm	0.31 ppm	1 g	Raw and Processed foods	1h 50m
M2115	Buckwheat ELISA - Type II	0.31-20 ppm	0.31 ppm	1 g	Raw and Processed foods	2h
M2244	Buckwehat Rapid Test Easy	N/A	5 ppm	1g / 100 µL extract	Food & Food Prep Surfaces	15m
M2264	Buckwehat Rapid Test Pro II	N/A	5 ppm	1g / 100 µL extract	Food & Food Prep Surfaces	15m
M2102	Casein ELISA	0.31-20 ppm	0.31 ppm	1 g	Raw and Processed foods	2h
M2113	Casein ELISA - Type II	0.31-20 ppm	0.31 ppm	1 g	Raw and Processed foods	1h 50m
M2242	Casein Rapid Test Easy	N/A	0.5 ppm	200 µL	Prep Surfaces or Rinse Water	10m
M2262	Casein Rapid Test Pro II	N/A	5 ppm	1g / 100 µL extract	Food & Food Prep Surfaces	15m
M2118	Crustacean ELISA - Type II	0.31-20 ppm	0.31 ppm	1 g	Raw and Processed foods	2h
M2247	Crustacean Rapid Test Easy	N/A	0.5 ppm	200 µL	Prep Surfaces or Rinse Water	10m
M2267	Crustacean Rapid Test Pro II	N/A	5 ppm	1g / 100 µL extract	Food & Food Prep Surfaces	15m
M2101	Egg (Ovalbumin) ELISA	0.31-20 ppm	0.31 ppm	1 g	Raw and Processed foods	2h

FOOD ALLERGEN KITS

Cat #	Product Name	Assay Range	Sensitivity	Sample Size	Sample Type	Assay Time
M2111	Egg (Ovalbumin) ELISA - Type II	0.31-20 ppm	0.31 ppm	1 g	Raw and Processed foods	1h 50m
M2261	Egg (Ovalbumin) Rapid Test Pro II	N/A	5 ppm	1g / 100 µL extract	Food & Food Prep Surfaces	15m
M2241	Egg (Ovomucoid) Rapid Test Easy	N/A	0.5 ppm	200 µL	Prep Surfaces or Rinse Water	10m
M2119	Hazelnut ELISA - Type II	0.16 -10 ppm	0.16 ppm	1 g	Raw and Processed foods	1h 50m
M2122	Milk, Total ELISA - Type II	0.31-20 ppm	0.31 ppm	1 g	Raw and Processed foods	1h 50m
M2269	Milk, Total Rapid Test Pro II	N/A	5 ppm	1g / 100 µL extract	Food & Food Prep Surfaces	15m
M2116	Peanut ELISA - Type II	0.31-20 ppm	0.31 ppm	1 g	Raw and Processed foods	1h 50m
M2120	Peanut, High Sensitivity ELISA - Type II	0.2 -12.8 ppm	0.2 ppm	1 g	Raw and Processed foods	1h 50m
M2245	Peanut Rapid Test Pro II	N/A	5 ppm	1g / 100 µL extract	Food & Food Prep Surfaces	15m
M2265	Peanut Rapid Test Easy	N/A	0.5 ppm	200 µL	Prep Surfaces or Rinse Water	10m
M2121	Sesame ELISA - Type II	0.16 -10 ppm	0.16 ppm	1 g	Raw and Processed foods	1h 50m
M2270	Shellfish Rapid Test Pro II	N/A	5 ppm	1g / 100 µL extract	Food & Food Prep Surfaces	15m
M2117	Soy ELISA - Type II	0.31-20 ppm	0.31 ppm	1 g	Raw and Processed foods	1h 50m
M2246	Soy Rapid Test Easy	N/A	0.5 ppm	200 µL	Prep Surfaces or Rinse Water	10m
M2124	Walnut ELISA - Type II	0.31-20 ppm	0.31 ppm	1 g	Raw and Processed foods	1h 50m
M2268	Walnut Rapid Test Pro II	N/A	5 ppm	1g / 100 µL extract	Food & Food Prep Surfaces	15m
M2103	Wheat/Gluten (Gliadin) ELISA	0.31-20 ppm (0.26-17 ppm Gluten)	0.26 ppm	1 g	Raw and Processed foods	2h
M2114	Wheat/Gluten (Gliadin) ELISA - Type II	0.31-20 ppm (0.26-17 ppm Gluten)	0.31 ppm	1 g	Raw and Processed foods	1h 50m
M2243	Wheat/Gluten (Gliadin) Rapid Test Easy	N/A	0.5 ppm	200 µL	Prep Surfaces or Rinse Water	10m
M2263	Wheat/Gluten (Gliadin) Rapid Test Pro II	N/A	5 ppm	1g / 100 µL extract	Food & Food Prep Surfaces	15m

SUPPLYING THE RESEARCH COMMUNITY FOR 35 YEARS

Since the company was founded in 1989, Crystal Chem has grown to become one of leading providers of research assays



EASY ONLINE ORDERING AT CRYSTALCHEM.COM

YOU CAN BROWSE ALL OUR PRODUCTS, SEE SPECS, AND ORDER ONLINE AT WWW.CRYSTALCHEM.COM.



Crystal Chem USA
955 Busse Road
Elk Grove Village, IL 60007 USA
Tel: (630) 889-9003
sales@crystalchem.com

Crystal Chem Europe
Daalderweg 1, 1507DS
Postbus 9, 1500EA
Zaandam, Netherlands
Tel: +31 (0)20 808 5931
europe@crystalchem.com